

## INDEX

	<b>Tables</b>	<b>Pages</b>
1. General Review of Finance		1 - 6
2. Financial Position for year 2020-2021 with corresponding position in the previous year	1	7
3. Trends in Overall Budgetary position for the years from 2014-2015 to 2020-2021	2	8 –10
4. Assets of the State Govt. as on 31 <sup>st</sup> March of the year from 2014-2015 (onwards)	3	11
5. Liabilities of the State Government as on 31 <sup>st</sup> March 2014 to 31 <sup>st</sup> March 2019	4	12
6. Revenue Expenditure met from Revenue Account (2014-2015 onwards)	5	13-14
7. General Budgetary position 2020-2021	6	15
8. Revenue from State Taxes and Duties 2014-2015 onwards	7	16
9. Devolution of taxes, Duties and Grants in-aid from the Centre.	8	17
10. Non-Tax Revenue and Receipt from Public Undertakings.	9	18-19
11. Revenue from Departmental Undertakings (Net)	10	20
12. Revenue Expenditure on Economic Development 2014-2015 onwards.	11	21-22
13. Revenue Expenditure on Social Services (2014-2015 onwards).	12	23
14. Non-developmental Expenditure met from the Revenue Accounts (2014-2015 onwards)	13	24-25

## INDEX

	<b>Tables</b>	<b>Pages</b>
15. Capital Expenditure (2014-2015 onwards)	14	26-27
16. Development Expenditure (2014-2015 onwards)	15	28-29
17. Annual Plan outlay for 2018-2019,2019-2020 and 2020-2021	16	30
18. Actual expenditure under Annual Plan 2016-2017 to 2018-2019	17	31
19. Magnitude of Debt of the State Government from the Central Government and other financial institutions	18A	32
	18B	33
	18C	34
	18D	35
	18E	36
	18F	37
	18G	38

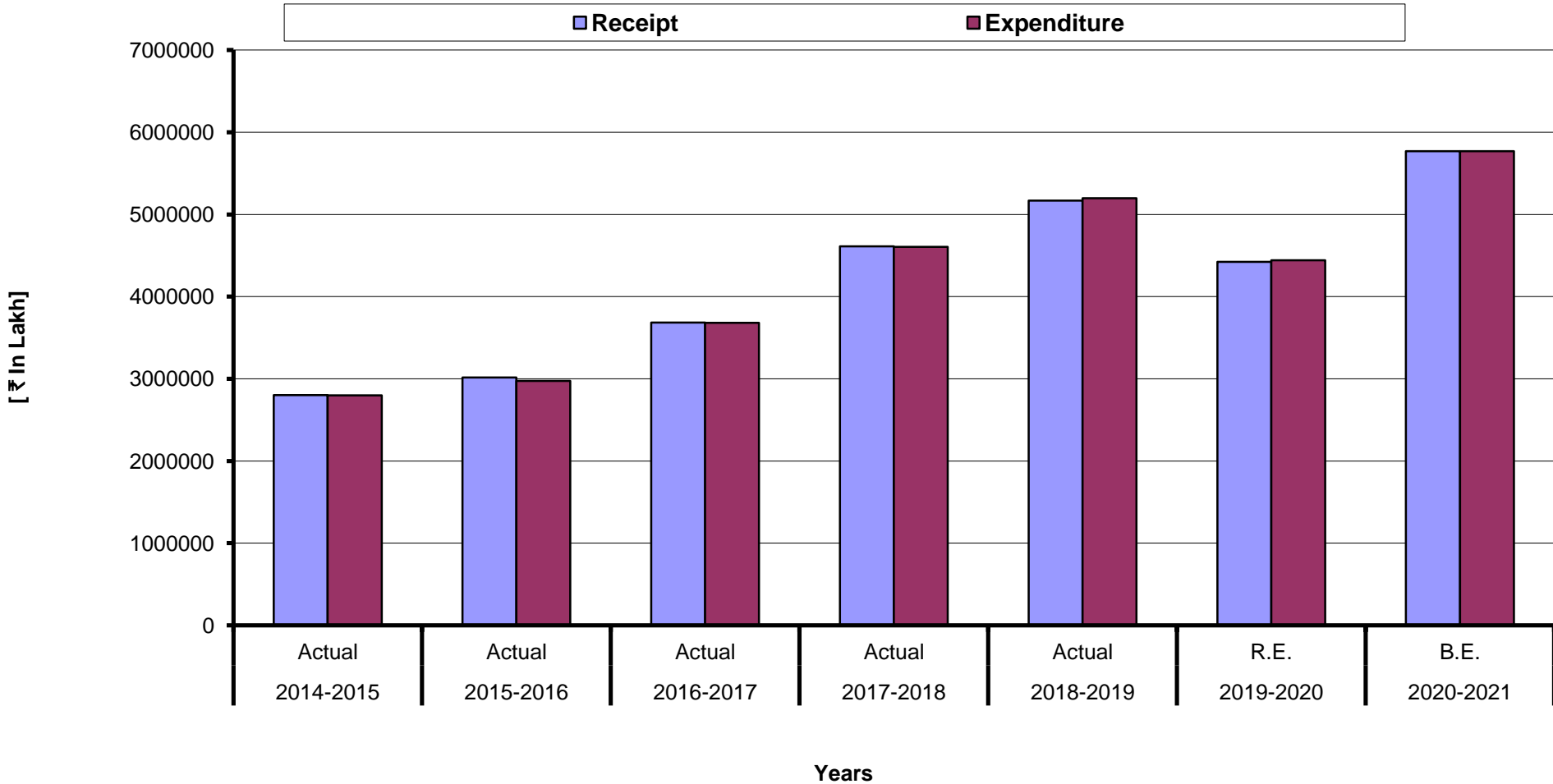
**Table - I**

The financial position for the year 2020-2021 with corresponding position in the previous years

(₹ in Lakh)

Heads	2014-2015 Actual	2015-2016 Actual	2016-2017 Actual	2017-2018 Actual	2018-2019 Actual	2019-2020 R.E.	2020-2021 B.E.
1	2	3	4	5	6	7	8
Opening Balance	-49030.80	-46888.21	-7197.46	-2983.11	3530.00	-25570.95	-43943.67
Revenue Receipt	642825.40	704313.13	893894.85	927348.13	971862.19	1443796.00	1535259.00
Capital Receipt under the Consolidated Fund	74672.08	85600.89	122924.03	124259.24	134270.31	176159.00	202197.00
Capital Receipt under the Contingency Fund	10500.00	10500.00	20500.00	30500.00	30500.00	30500.00	30500.00
Capital Receipt under the Public Account	2072792.35	2213753.18	2647849.53	3530573.54	4030162.28	2772814.26	4002043.61
<b>Total Receipt</b>	<b>2800789.83</b>	<b>3014167.20</b>	<b>3685168.41</b>	<b>4612680.91</b>	<b>5166794.78</b>	<b>4423269.26</b>	<b>5769999.61</b>
<b>GRAND TOTAL</b>	<b>2751759.03</b>	<b>2967278.99</b>	<b>3677970.95</b>	<b>4609697.80</b>	<b>5170324.78</b>	<b>4397698.31</b>	<b>5726055.94</b>
Revenue Expenditure	625186.07	634772.75	833653.65	842268.14	1025594.12	1369947.63	1442758.22
Capital Expenditure under the Consolidated Fund	137726.08	160658.65	173503.44	143511.00	190271.19	267745.86	300455.27
Capital Expenditure under Contingency Fund	10500.00	10500.00	20500.00	20500.00	30500.00	30500.00	30500.00
Capital Expenditure under the Public Account	2025235.09	2168545.05	2653296.97	3599888.42	3949530.42	2773448.49	3995004.25
<b>Total Expenditure</b>	<b>2798647.24</b>	<b>2974476.45</b>	<b>3680954.06</b>	<b>4606167.56</b>	<b>5195895.73</b>	<b>4441641.98</b>	<b>5768717.74</b>
<b>Closing Balance</b>	<b>-46888.21</b>	<b>-7197.46</b>	<b>-2983.11</b>	<b>3530.00</b>	<b>-25570.95</b>	<b>-43943.67</b>	<b>-42661.80</b>
<b>GRAND TOTAL</b>	<b>2751759.03</b>	<b>2967278.99</b>	<b>3677970.95</b>	<b>4609697.80</b>	<b>5170324.78</b>	<b>4397698.31</b>	<b>5726055.94</b>
NET RESULT							
a) On Revenue Account	17639.33	69540.38	60241.20	85079.99	-53731.93	73848.37	92500.78
b) Outside Revenue Account	-15496.74	-29849.63	-56026.85	-78566.64	24630.98	-92221.09	-91218.91
<b>c) All Accounts excluding the opening and closing balance</b>	<b>2142.59</b>	<b>39690.75</b>	<b>4214.35</b>	<b>6513.35</b>	<b>-29100.95</b>	<b>-18372.72</b>	<b>1281.87</b>

**Financial Position during 2020-2021 with Corresponding Position in Previous Years  
(Table - I)**



**Table - II**

**Trends in overall Budget position for the years from 2014-2015 to 2020-2021**

(₹ in Lakh)

Particular	2014-2015 Actual	2015-2016 Actual	2016-2017 Actual	2017-2018 Actual	2018-19 Actual	2019-2020 R.E	2020-2021 B.E
1	2	3	4	5	6	7	8
<b>Opening Balance</b>	<b>-49030.80</b>	<b>-46888.21</b>	<b>-7197.46</b>	<b>-2983.11</b>	<b>3530.00</b>	<b>-25570.95</b>	<b>-43943.67</b>
A. REVENUE ACCOUNT-							
I. Receipt-							
1. Share of Central Taxes	138168.00	327492.00	391105.00	432314.00	487769.00	542237.00	599898.00
2. State Taxes	93920.42	105835.87	118600.62	145009.51	180462.23	208980.00	237698.00
3. Non-Tax Revenue	34328.60	22859.89	68523.69	36663.47	42770.20	60057.00	69029.00
4. Grant-in-aid from the Centre	376408.38	248125.37	315665.54	313361.15	260860.76	632522.00	628634.00
<b>Total-A-I</b>	<b>642825.40</b>	<b>704313.13</b>	<b>893894.85</b>	<b>927348.13</b>	<b>971862.19</b>	<b>1443796.00</b>	<b>1535259.00</b>
II. Expenditure							
1. General Services	205009.60	231226.60	250708.12	285578.12	355420.01	425775.42	432790.44
2. Social and Community Services	234179.65	233832.33	307218.32	311869.91	412723.56	515970.38	568764.37
3. Economic Services	185996.82	169704.24	275727.21	244820.11	257450.55	428201.83	441203.41
4. Grant-in-aid and Contributions	.	.					
<b>Total-A-II</b>	<b>625186.07</b>	<b>634763.17</b>	<b>833653.65</b>	<b>842268.14</b>	<b>1025594.12</b>	<b>1369947.63</b>	<b>1442758.22</b>
III. Revenue Account-							
<b>Surplus(+)</b> or	<b>17639.33</b>	<b>69549.96</b>	<b>60241.20</b>	<b>85079.99</b>	<b>-53731.93</b>	<b>73848.37</b>	<b>92500.78</b>
<b>Deficit(-)</b>							

(₹ in Lakh)

Particular	2014-2015 Actual	2015-2016 Actual	2016-2017 Actual	2017-2018 Actual	2018-19 Actual	2019-2020 R.E	2020-2021 B.E
1	2	3	4	5	6	7	8
B. CAPITAL ACCOUNT-							
I.Capital Receipts							
1. Market Loans	54500.35	68000.00	100100.00	111550.00	112200.00	124025.00	155200.00
2. Loans from Life Insurance Corporation of India				0.00	0.00	0.00	0.00
3. Loans from the NABARD	7787.83	6638.04	8011.57	10297.07	14256.68	25000.00	20000.00
4. Compensation & Other Bonds Power			12500.00	0.00	0.00	0.00	0.00
5. Loans from the G.I.C. (HUDCO)			0.00	0.00	0.00	0.00	0.00
6. Loans from NCDC of India			4.00	0.00	3771.00	0.00	0.00
7. Ways & Means Advance from R.B.I.			0.00	0.00	0.00	17500.00	17500.00
8. Other Loans			0.00	0.00	0.00	1000.00	0.00
9. Special Securities issued to National Small Saving Fund	9931.00	8832.00	0.00	0.00	0.00	0.00	0.00
10. Loans and Advances from the Central Govt.	476.70	223.46	427.55	666.85	2241.22	6140.00	6754.00
11. Recoveries of loans and Advances	1976.20	1907.74	1880.91	1745.32	1801.41	2494.00	2743.00
12. Inter State Settlement							
13. Contingency Fund (Net)				10000.00			
14. Contingency Fund & Public Account (Net)	47557.26	45208.13	-5447.44	-69314.88	80631.86	-634.23	7039.35
<b>Total - B - I</b>	<b>122229.34</b>	<b>130809.37</b>	<b>117476.59</b>	<b>64944.36</b>	<b>214902.17</b>	<b>175524.77</b>	<b>209236.35</b>
B.II. Capital Expenditure							
a) Public Debt							
1. Repayment of Market Loan	10208.30	22031.30	28267.20	19568.70	25940.26	27354.00	19000.00
2. Loans from Life Insurance Corporation of India	3.84	2.28	0.52	0.00	0.00	0.00	0.00
3. Loans from the NABARD Compensation/Other Bonds	5344.75	5773.39	6068.49	6209.93	6505.93	6600.00	7600.00
i) Power Bonds	139.90	0.00	0.00	0.00	0.00	0.00	0.00
4. Loans from the National Development Corporation	34.68	14.82	13.66	10.08	3.09	3.00	3.00
5. Loans from the General Insurance Corporation of India	7.60	7.03	6.44	5.78	5.50	6.00	6.00

(₹ in Lakh)

Particular	2014-2015 Actual	2015-2016 Actual	2016-2017 Actual	2017-2018 Actual	2018-19 Actual	2019-2020 R.E	2020-2021 B.E
1	2	3	4	5	6	7	8
6. Repayment of Ways and Means Advances from the Reserve Bank of India		139.90	0.00	0.00	0.00	17500.00	17500.00
7. Others loans (HUDCO)	1026.27	925.23	855.45	595.27	115.50	30.00	0.00
8. Special Securities issued to National Small Savings Fund	1519.10	2855.55	4238.25	4538.25	4962.25	5500.00	5500.00
9. Repayment of Loans to Central Government	1981.83	1994.78	1990.67	2033.60	2062.00	2127.00	2340.00
<b>Total - (a)</b>	<b>20266.27</b>	<b>33744.28</b>	<b>41440.68</b>	<b>32961.61</b>	<b>39594.53</b>	<b>59120.00</b>	<b>51949.00</b>
b) Appropriation to Contingency Fund							
c) Loans & Advances	5610.97	15835.19	3083.11	2205.35	8948.90	35596.10	10261.00
d) Inter-State							
e) Capital Outlay on	111848.84	111089.11	128979.65	98344.04	141727.76	173029.76	238245.27
1. General Services	8237.94	9724.14	8299.80	4976.38	8498.02	11990.60	17496.30
2. Social & Community Services	36334.22	28968.74	45935.58	36057.34	35999.82	58029.69	76050.03
3. Economic Services	67276.67	72396.23	74744.27	57310.32	97229.92	103009.47	144698.94
f) Transfer to Contingency Fund			0.00	10000.00	0.00	0.00	0.00
<b>Total - B - II</b>	<b>137726.08</b>	<b>160668.58</b>	<b>173503.44</b>	<b>143511.00</b>	<b>190271.19</b>	<b>267745.86</b>	<b>300455.27</b>
Surplus (+)							
<b>Deficit(-)</b>	<b>-15496.74</b>	<b>-29859.21</b>	<b>-56026.85</b>	<b>-78566.64</b>	<b>24630.98</b>	<b>-92221.09</b>	<b>-91218.92</b>
C-Overall Position							
<b>I.Total Receipts on Revenue and Capital</b>	<b>765054.74</b>	<b>835122.50</b>	<b>1011371.44</b>	<b>992292.49</b>	<b>1186764.36</b>	<b>1619320.77</b>	<b>1744495.35</b>
<b>II.Total Expenditure on Revenue and Capital Account</b>	<b>762912.15</b>	<b>795431.75</b>	<b>1007157.09</b>	<b>985779.14</b>	<b>1215865.31</b>	<b>1637693.49</b>	<b>1743213.49</b>
Surplus (+)	2142.59	39690.75	4214.35	6513.35	-29100.95	-18372.72	1281.86
Deficit(-)							
<b>Closing Balance</b>	<b>-46888.21</b>	<b>-7197.46</b>	<b>-2983.11</b>	<b>3530</b>	<b>-25570.95</b>	<b>-43943.67</b>	<b>-42661.81</b>

## Overall Budget Position from 2013-2014 to 2019-2020

**Table - II**

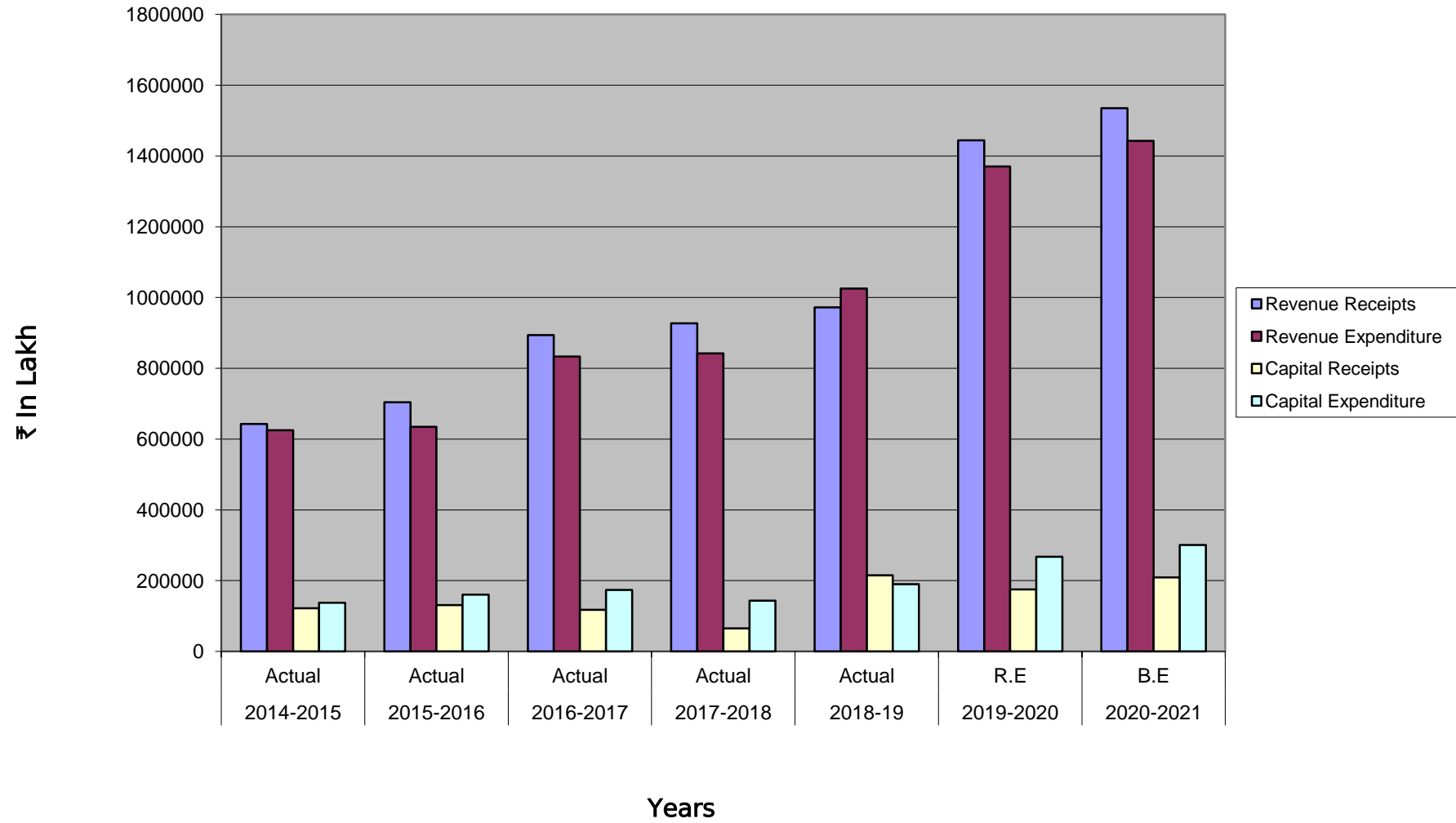




Table - III

Assets of the State Govt. as on 31st March of the year from 2014-2015 (onwards)

(₹ in Lakh)

Particulars	2014-2015 Actual	2015-2016 Actual	2016-2017 Actual	2017-2018 Actual	2018-2019 Actual	2019-2020 R.E.	2020-2021 B.E.
1	2	3	4	5	6	7	8
Assets-							
1. Loans and Advances due to Government							
i) Loan and Advances by the State Government	62691.76	76619.21	77821.40	77361.37	70213.88	37111.78	29593.78
<b>Total-1</b>	<b>62691.76</b>	<b>76619.21</b>	<b>77821.40</b>	<b>77361.37</b>	<b>70213.88</b>	<b>37111.78</b>	<b>29593.78</b>
2. Other Assets							
i) Capital Outlay	1250682.00	1446858.75	1655671.24	1782855.77	1973126.96	2240872.82	2541328.09
ii) Civil Advances	180.61	180.61	180.11	-7819.89	-7819.89	-7467.95	-7180.20
<b>Total-2</b>	<b>1250862.61</b>	<b>1447039.36</b>	<b>1655851.35</b>	<b>1775035.88</b>	<b>1965307.07</b>	<b>2233404.87</b>	<b>2534147.89</b>
Cash Balances*RBI AG- (Closing Balance alongwith AG's Closing Balance A/C)	-46888.21	-7197.46	-2983.11	3530.00	-25570.95	-43943.67	-42661.81
4. Investments							
i) Earmarked							
ii) Un-earmarked (a+b)	1552040.67	1801297.67	2295251.14	3143945.61	3513366.75	2352761.75	3636292.74
(a) Long term investment (GOI Securities/Sinking Fund)	932.67	932.67	1014.14	1095.61	1195.75	1195.75	1195.75
(b) Short term investment (14 days Treasury Bills)	1628499.00	1800365.00	2294237.00	3142850.00	3512171.00	2351566.00	3635096.99
<b>Total-4</b>	<b>1552040.67</b>	<b>1801297.67</b>	<b>2295251.14</b>	<b>3143945.61</b>	<b>3513366.75</b>	<b>2352761.75</b>	<b>3636292.74</b>
<b>Total-A</b>	<b>2818706.83</b>	<b>3317758.78</b>	<b>4025940.78</b>	<b>4999872.86</b>	<b>5523316.75</b>	<b>4579334.73</b>	<b>6157372.60</b>

Table - IV

## Liabilities of the State Government as on 31st. March 2014 to 31st March 2021

(₹ in Lakh)

Particulars	2014-2015 Actual	2015-2016 Actual	2016-2017 Actual	2017-2018 Actual	2018-2019 Actual	2019-2020 R.E.	2020-2021 B.E.
1	2	3	4	5	6	7	8
<b>B. Liabilities</b>							
1. Loan from Government of India	16139.27	14367.95	12804.83	11438.08	11617.30	15630.30	20044.30
2. Open Market Loans	300161.81	346130.51	417963.31	509944.61	596204.35	692875.35	829075.35
3. Floating Loans		0.00	0.00	0.00	0.00	0.00	0.00
4. Other Loans		0.00	0.00	0.00	0.00	0.00	0.00
i) Loan from L.I.C.	13.20	10.92	10.40	10.40	10.40	10.40	10.40
ii) Loan from G.I.C.	29.29	22.26	15.82	10.04	4.54	-1.46	-7.46
iii) Loan from N.A.B.A.R.D.	30484.59	31349.24	33292.32	37379.46	45130.21	63530.21	75930.21
iv) Loan from N.C.D.C.	45.77	30.95	21.29	11.21	3779.12	3776.12	3773.12
v) Loan from Central Ware Housing Corporation		0.00	0.00	0.00	0.00	0.00	0.00
vi) Other Loans (HUDCO)	71574.24	77550.69	73312.44	68774.19	63811.94	58311.94	52811.94
vii) Compensation and other Bonds Power	139.90	0.00	12500.00	12500.00	12500.00	12500.00	12500.00
viii) Speical Securities issued to National Small Saving Fund	2479.76	1554.53	699.08	103.81	-11.69	958.31	958.31
<b>Total - 4</b>	<b>104766.75</b>	<b>110518.59</b>	<b>119851.35</b>	<b>118789.11</b>	<b>125224.52</b>	<b>139085.52</b>	<b>145976.52</b>
5. General Provident Fund	110088.54	123262.22	137379.53	153150.74	171087.27	177595.27	183835.27
6. Other Deposits -							
i) Development and Welfare Fund - 8229- Cash only	11.64	11.64	11.64	11.64	11.64	11.64	11.64
ii) Calamity Relief Fund	2251.26	1670.26	2970.26	470.26	470.26	470.26	470.26
iii) Other Deposit Accounts	141062.19	117576.81	206532.87	153756.37	156408.68	88100.94	82493.42
<b>Total - 6</b>	<b>143325.09</b>	<b>119258.71</b>	<b>209514.77</b>	<b>154238.27</b>	<b>156890.58</b>	<b>88582.84</b>	<b>82975.32</b>
<b>Total - B</b>	<b>674481.46</b>	<b>713537.98</b>	<b>897513.79</b>	<b>947560.81</b>	<b>1061024.02</b>	<b>1113769.28</b>	<b>1261906.76</b>

## LIABILITIES OF THE STATE GOVERNMENT (TABLE - IV)

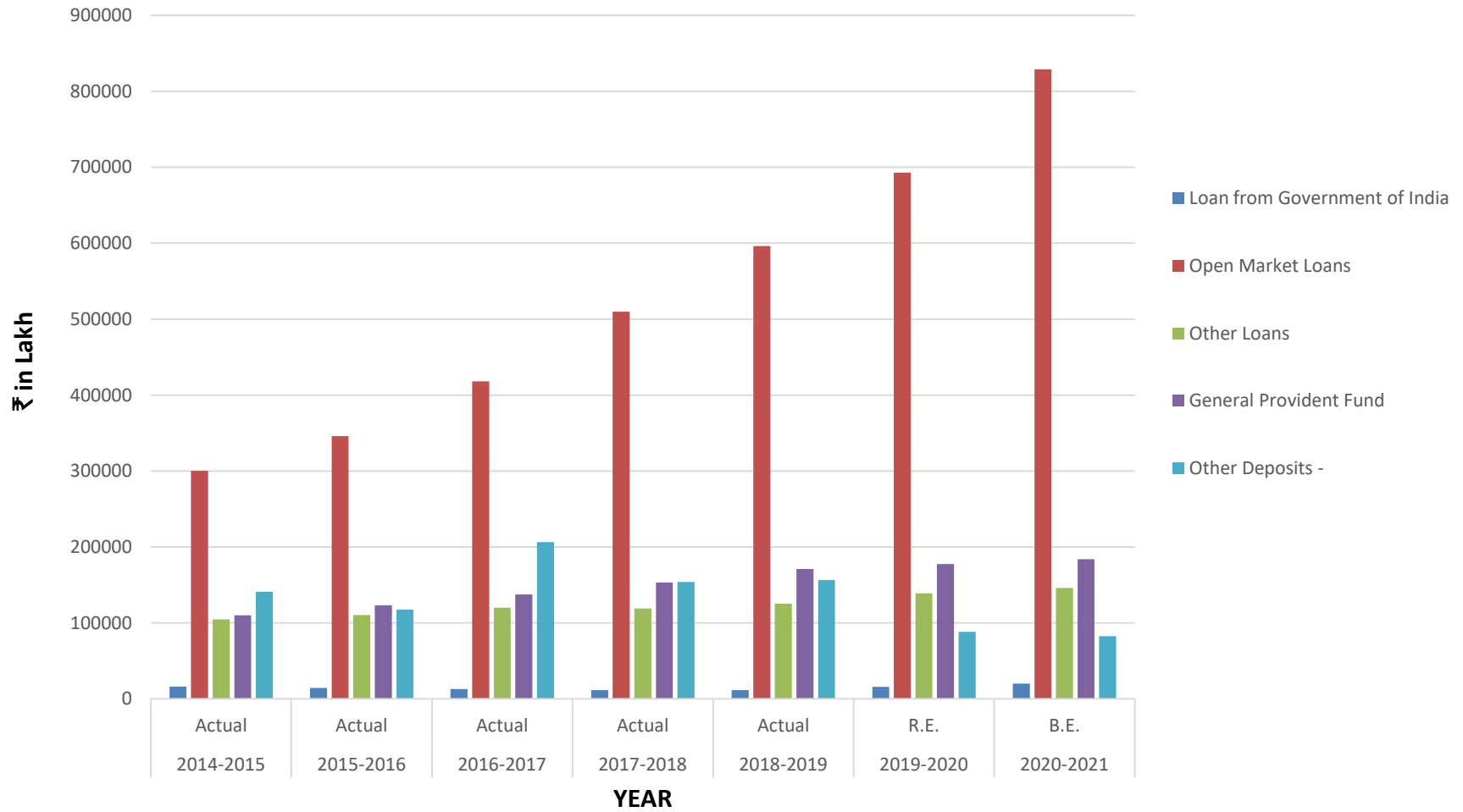


Table - V

REVENUE ACCOUNT  
(2014-2015 onwards)

(₹ in Lakh)

Name of Account	2014-2015 Actual	2015-2016 Actual	2016-2017 Actual	2017-2018 Actual	2018-2019 Actual	2019-2020 R.E.	2020-2021 B.E.
1	2	3	4	5	6	7	8
REVENUE-							
1. Tax Revenue-							
a) Share of Central Tax Duties, etc.	138168.00	327492.00	391105.00	432314.00	487769.00	542237.00	599898.00
b) State Tax Revenue	93920.42	105835.87	118600.62	145009.51	180462.23	208980.00	237698.00
<b>Total -1</b>	<b>232088.42</b>	<b>433327.87</b>	<b>509705.62</b>	<b>577323.51</b>	<b>668231.23</b>	<b>751217.00</b>	<b>837596.00</b>
2. Non Tax Revenue							
a) Grant-in-aid from the Central Government	376408.38	248125.37	315665.54	313361.15	260860.76	632522.00	628634.00
b) Other Non Tax Revenue	34328.60	22859.89	68523.69	36663.47	42770.20	60057.00	69029.00
<b>Total-2</b>	<b>410736.98</b>	<b>270985.26</b>	<b>384189.23</b>	<b>350024.62</b>	<b>303630.96</b>	<b>692579.00</b>	<b>697663.00</b>
<b>Total-1+2</b>	<b>642825.40</b>	<b>704313.13</b>	<b>893894.85</b>	<b>927348.13</b>	<b>971862.19</b>	<b>1443796.00</b>	<b>1535259.00</b>
II. REVENUE EXPENDITURE							
1. Development Expenditure							
a) EXPENDITURE ON ECONOMIC DEVELOPMENT							
1) Agriculture & Allied Activities	59048.65	58357.22	56474.06	57334.59	67807.06	111726.43	103772.57
2) Rural Development	56813.37	53431.39	133104.97	106573.35	77774.93	173511.50	113894.06
3) Special Areas Programme	1426.53	1771.23	1079.60	1297.50	1253.29	2277.00	5586.00
4) Irrigation and Flood Control	3688.70	3945.89	4203.38	4857.70	5855.66	6903.74	9764.38
5) Energy	16716.85	7051.09	12973.89	11639.84	17091.89	21951.07	21543.70
6) Industry & Mineral	19449.13	14788.54	14772.71	23120.75	19875.26	21628.17	25686.41
7) Transport	12146.50	14910.08	18616.46	17307.79	18908.87	20606.35	23894.01
8) Science, Technology & Environment	53.85	58.33	52.49	45.32	56.74	88.65	98.35
9) General Economic Services	16653.24	15390.47	34449.65	22643.27	48826.85	69508.92	136963.93
<b>Total-(a)</b>	<b>185996.82</b>	<b>169704.24</b>	<b>275727.21</b>	<b>244820.11</b>	<b>257450.55</b>	<b>428201.83</b>	<b>441203.41</b>

(₹ in Lakh)

Name of Account	2014-2015 Actual	2015-2016 Actual	2016-2017 Actual	2017-2018 Actual	2018-2019 Actual	2019-2020 R.E.	2020-2021 B.E.
1	2	3	4	5	6	7	8
b) Social and Community Services	234179.65	233832.33	307218.32	311869.91	412723.56	515970.38	568764.37
<b>Total-II-1(b)</b>	<b>234179.65</b>	<b>233832.33</b>	<b>307218.32</b>	<b>311869.91</b>	<b>412723.56</b>	<b>515970.38</b>	<b>568764.37</b>
<b>Total -II-1</b>	<b>420176.47</b>	<b>403536.57</b>	<b>582945.53</b>	<b>556690.02</b>	<b>670174.11</b>	<b>944172.21</b>	<b>1009967.78</b>
2) Non-Developmental Expenditure							
a) EXPENDITURE ON GENERAL SERVICES							
1. Organs of State	11649.35	12618.09	14465.14	20339.83	27182.00	29248.64	29074.75
2. Administrative Services	92674.97	97081.61	104724.03	118400.66	144791.85	216901.61	179368.53
3. Collection of Taxes(Fiscal Services)	6264.23	7179.57	11131.92	7992.09	12386.79	14472.43	13424.03
4. Debt Services	42923.97	49725.97	55598.60	63755.99	70562.71	79679.74	90158.90
5. Pension and Miscellaneous General Services	51497.08	58946.77	64788.43	75089.55	100496.66	85473.00	120764.23
<b>Total-2(a)</b>	<b>205009.60</b>	<b>225552.01</b>	<b>250708.12</b>	<b>285578.12</b>	<b>355420.01</b>	<b>425775.42</b>	<b>432790.44</b>
b) GRANT-IN-AID CONTRIBUTIONS							
<b>Total-II 2</b>	<b>205009.60</b>	<b>225552.01</b>	<b>250708.12</b>	<b>285578.12</b>	<b>355420.01</b>	<b>425775.42</b>	<b>432790.44</b>
<b>Total-II:1+2</b>	<b>625186.07</b>	<b>629088.58</b>	<b>833653.65</b>	<b>842268.14</b>	<b>1025594.12</b>	<b>1369947.63</b>	<b>1442758.22</b>
<b>Surplus(+)/Deficit(-)</b>	<b>17639.33</b>	<b>75224.55</b>	<b>60241.20</b>	<b>85079.99</b>	<b>-53731.93</b>	<b>73848.37</b>	<b>92500.78</b>

# REVENUE ACCOUNT

(TABLE - V)

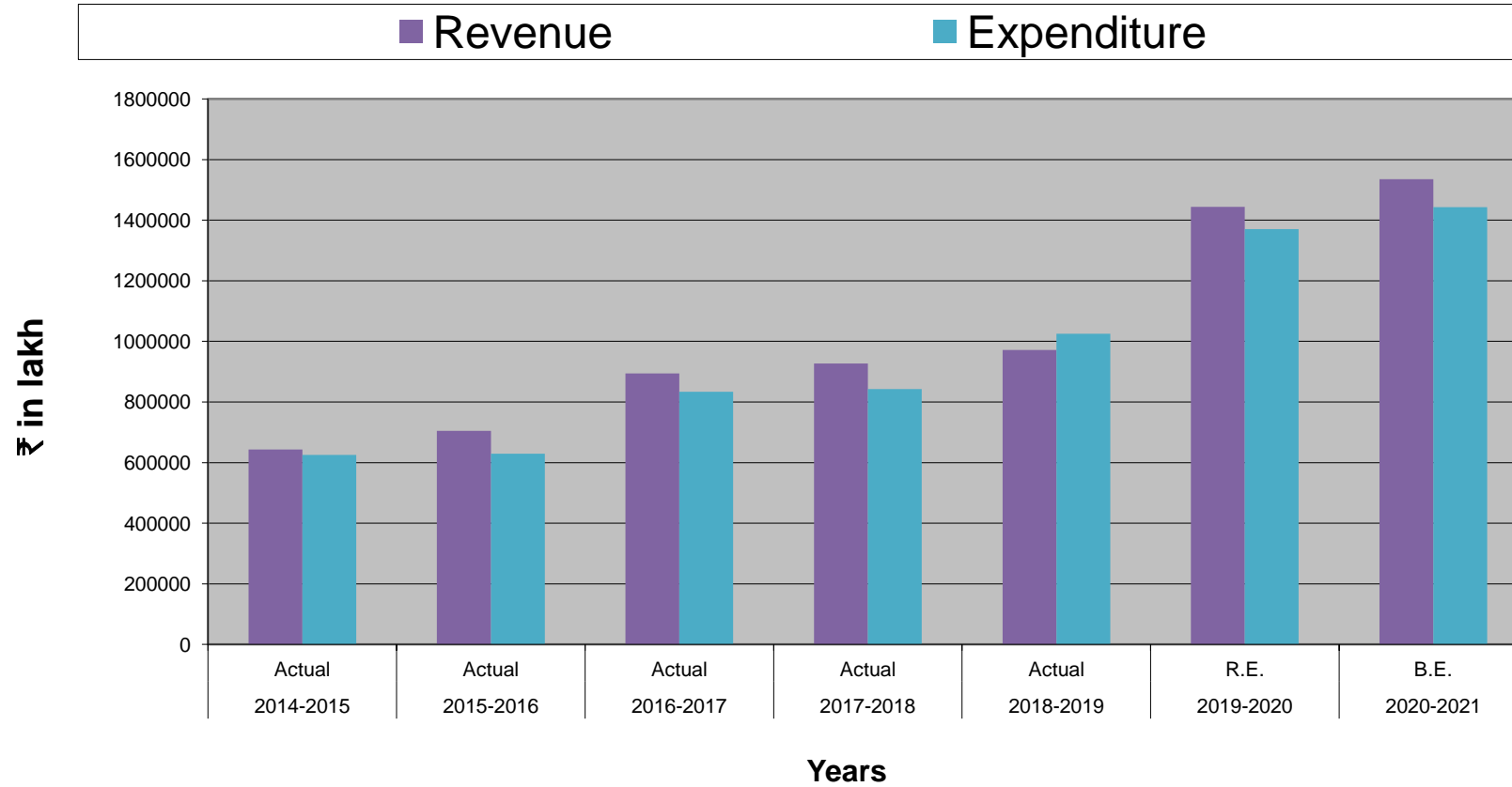


Table - VI

General Budgetary Position - 2020-2021  
REVENUE ACCOUNT

(₹ in Lakh)

Items of Revenue	Revenue Amount	Percentage	Expenditure Items of expenditure	Amount	Percentage
1	2	3	4	5	6
1. Taxes and Duties			1. Development Expenditure		
a) Share in Central Taxes	599898.00	39.07	a) Social and Community Services	568764.37	39.42
b) State Taxes Revenue	237698.00	15.48	b) General Economic Services	441203.41	30.58
<b>Total - 1</b>	<b>837596.00</b>	<b>54.56</b>	<b>Total - 1</b>	<b>1009967.78</b>	<b>70.00</b>
2. Non Tax Revenue			2. Non Development		
a) i) Interest Receipt	6057.00	0.39	a) Organs of State	29074.75	2.02
ii) Dividends and Profit	23.00		b) Fiscal Services	13424.03	
b) Other non-tax Revenue -			c) Debts services	90158.90	
i) General Services	5978.00	0.39	d) Administrative Services	179368.53	12.43
ii) Social & Community Services	1729.00	0.11	e) Pension and Miscellaneous General Services	120764.23	8.37
iii) Economic Services	55242.00	3.60	f) Grants-in-aid contribution		0.00
c) Grants-in-aid from the Centre	628634.00	40.95			0.00
<b>Total - 2</b>	<b>697663.00</b>	<b>45.44</b>	<b>Total - 2</b>	<b>432790.44</b>	<b>22.82</b>
<b>Total Revenue (1+2)</b>	<b>1535259.00</b>	<b>100.00</b>	<b>Total Expenditure on</b>	<b>1442758.22</b>	<b>100.00</b>
			Revenue Account		
<b>Excess of Expenditure over Revenue</b>	<b>-92500.78</b>		<b>Excess of Revenue over Expenditure</b>	<b>92500.78</b>	

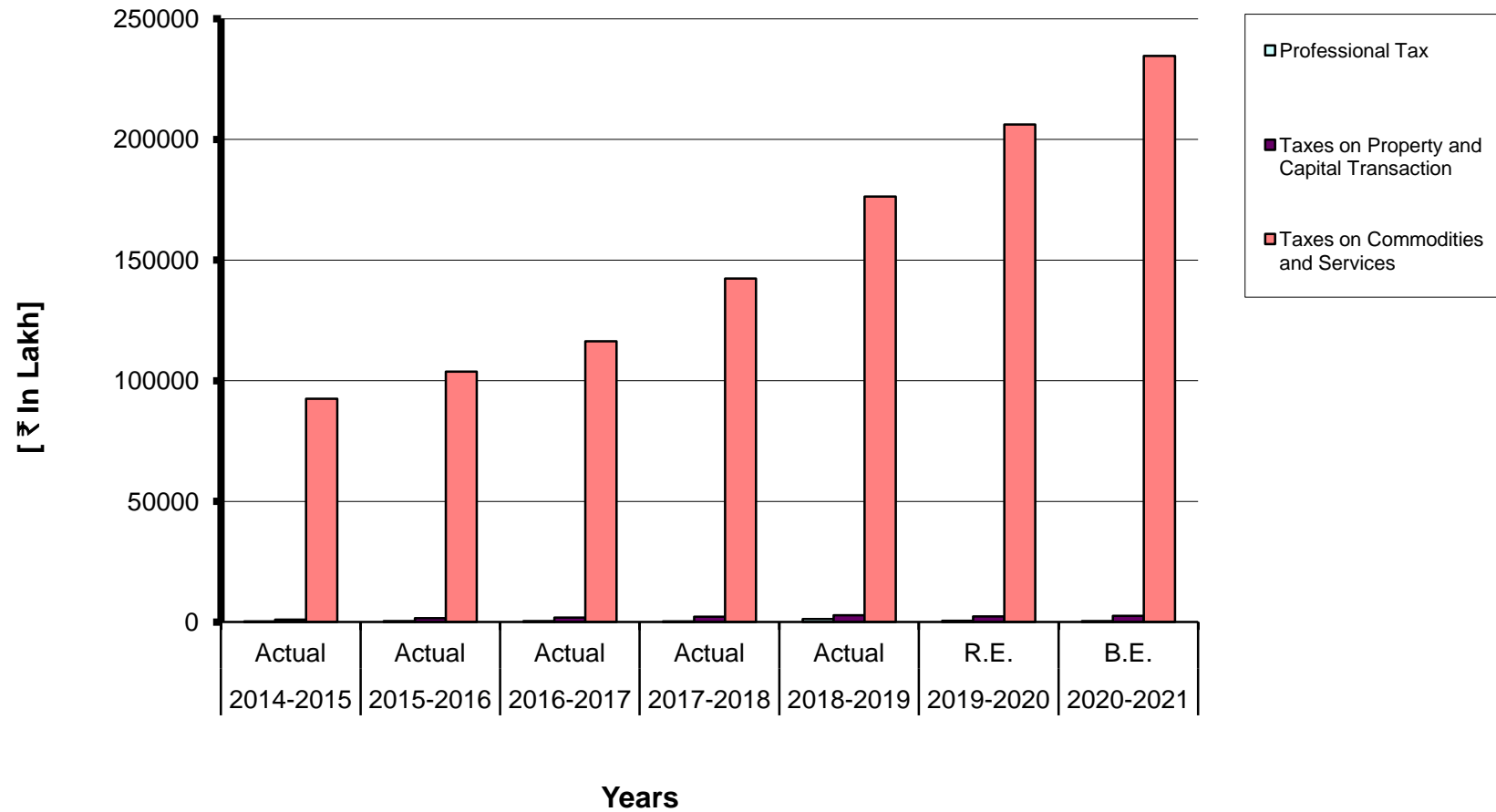
Table - VII

## Revenue from State Taxes &amp; Duties from 2014-2015 onwards

(₹ in Lakh)							
Name of Account	2014-2015 Actual	2015-2016 Actual	2016-2017 Actual	2017-2018 Actual	2018-2019 Actual	2019-2020 R.E.	2020-2021 B.E.
1	2	3	4	5	6	7	8
I. Taxes on Income and Expenditure							
1. Professional Tax	346.65	436.31	374.47	352.20	1274.09	498.00	477.00
<b>Total - I</b>	<b>346.65</b>	<b>436.31</b>	<b>374.47</b>	<b>352.20</b>	<b>1274.09</b>	<b>498.00</b>	<b>477.00</b>
II) Taxes on Property and Capital Transaction-							
1. Land Revenue	7.53	318.33	127.02	208.03	272.82	169.00	220.00
2. Stamps and Registration	990.16	1274.25	1719.27	2025.05	2618.78	2133.00	2346.00
<b>Total - II</b>	<b>997.69</b>	<b>1592.58</b>	<b>1846.29</b>	<b>2233.08</b>	<b>2891.60</b>	<b>2302.00</b>	<b>2566.00</b>
III. Taxes on Commodities and Services							
1. State Excise	15113.54	17003.50	16898.16	19930.24	22621.24	28985.00	31250.00
2. Sale Tax	72620.13	81178.78	93105.66	76662.70	62750.48	165000.00	67918.00
3. Taxes on Vehicles	3937.63	4201.11	4822.14	6700.83	8695.51	10000.00	12000.00
4. Taxes on Goods and Passengers	529.91	491.63	531.85	783.35	844.79	941.00	997.00
5. Taxes and Duties on Electricity	81.33	332.47	233.68	182.25	255.72	273.00	222.00
6. Taxes on Entertainment including Taxes on betting	293.54	599.49	788.37	565.15	532.75	981.00	333.00
7. Purchase Tax/ SGST				37599.71	80596.05		121935.00
<b>Total - III</b>	<b>92576.08</b>	<b>103806.98</b>	<b>116379.86</b>	<b>142424.23</b>	<b>176296.54</b>	<b>206180.00</b>	<b>234655.00</b>
<b>Grand Total</b>	<b>93920.42</b>	<b>105835.87</b>	<b>118600.62</b>	<b>145009.51</b>	<b>180462.23</b>	<b>208980.00</b>	<b>237698.00</b>



## Revenue from the State Taxes & Duties from 2014-2015 onwards (Table - VII)

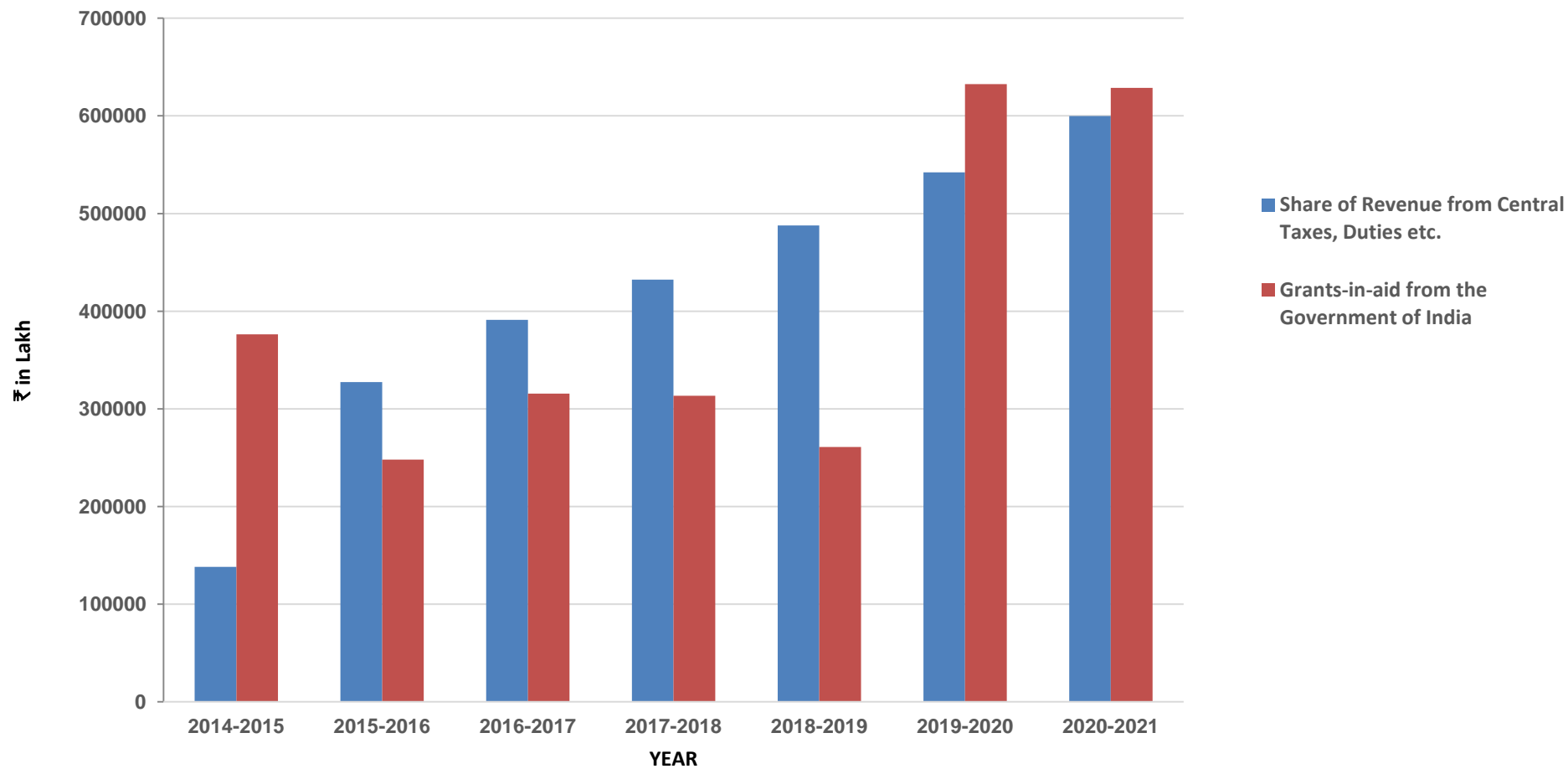


**Table - VIII**  
**Devolution of Taxes, Duties and Grants-in-aid from the Centre**

(₹ in Lakh)

Name of Account	2014-2015 Actual	2015-2016 Actual	2016-2017 Actual	2017-2018 Actual	2018-2019 Actual	2019-2020 R.E.	2020-2021 B.E.
1	2	3	4	5	6	7	8
<b>A. Share of Revenue from Central Taxes Duties etc.</b>							
1. Taxes on Income	34448.00	72690.00	87203.00	111820.00	125218.00	147541.00	171577.00
2. Union Excise Duties	12615.00	42874.00	61632.00	45620.00	23032.00	20917.00	24464.00
3. Corporation Tax	48240.00	103705.00	125473.00	132423.00	170027.00	175604.00	184527.00
4. Other Taxes on Income and Expenditure							
5. Wealth Tax	130.00	15.00	287.00	-4.00	62.00	-5.00	-6.00
6. Custom Tax	22341.00	52221.00	53973.00	43640.00	34656.00	34072.00	37443.00
7. Service Tax	20394.00	55987.00	62536.00	49015.00	4470.00	0.00	320.00
8. Central GST				6144.00	120674.00	164108.00	181573.00
9. Integrated GST				43656.00	9630.00	0.00	0.00
10. Other Taxes			1.00				
<b>Total - A</b>	<b>138168.00</b>	<b>327492.00</b>	<b>391105.00</b>	<b>432314.00</b>	<b>487769.00</b>	<b>542237.00</b>	<b>599898.00</b>
<b>B. Grants-in-aid from the Government of India</b>							
1. Grant-in-aid under Article 275(1) of the Constitution	57100.00	61800.00	53500.00	3664.58			
2. Grants-in-aid for Plan Schemes							
i) State Plan Schemes	258017.56	124015.39	226352.21				
ii) Central Plan Schemes	889.27	27043.52	1932.91				
iii) Centrally Sponsored Schemes	29344.37	19636.45	13819.37	214584.69	201116.62	525252.00	413426.30
iv) NEC Regional Schemes	7786.61	10043.80	9513.64	8880.56	5974.19	9000.00	14000.00
v) Finance Commission Grants				49996.00	22560.00	36620.00	82700.00
<b>Total - B.2</b>	<b>296037.81</b>	<b>180739.16</b>	<b>251618.13</b>	<b>273461.25</b>	<b>229650.81</b>	<b>570872.00</b>	<b>510126.30</b>
3. Other Grant-in-aid	23270.57	5586.21	10547.41	36235.32	31209.95	61650.00	118507.70
<b>Total - B</b>	<b>376408.38</b>	<b>248125.37</b>	<b>315665.54</b>	<b>313361.15</b>	<b>260860.76</b>	<b>632522.00</b>	<b>628634.00</b>
<b>Total Amount receivable from the Govt. of India (A+B)</b>	<b>514576.38</b>	<b>575617.37</b>	<b>706770.54</b>	<b>745675.15</b>	<b>748629.76</b>	<b>1174759.00</b>	<b>1228532.00</b>

## DEVOLUTION OF TAXES, DUTIES & GRANT-IN-AID FROM THE CENTRE (TABLE- VIII)



**Table - IX**  
**Non Tax Revenue and Receipt from Public Undertakings**

(₹ in Lakh)

Sources of Non Tax Revenue	2014-2015 Actual	2015-2016 Actual	2016-2017 Actual	2017-2018 Actual	2018-2019 Actual	2019-2020 R.E.	2020-2021 B.E.
1	2	3	4	5	6	7	8
I. a) Other Fiscal Services							
b) Interest Receipts -							
i) Interest from Departmental Commercial Undertakings				0.15	1.34		
ii) Interest from Public Sector and Other Undertakings							
iii) Interest from Cooperative Societies		16.65	0.00	0.37	0.00	0.60	0.60
iv) Interest from Local Bodies							
v) Interest from cultivators							
vi) Interest realised on investment of cash balance	2944.75	3147.65	3798.09	4488.08	5219.72	4715.40	5351.40
vii) Other receipts	828.48	769.09	827.14	761.04	605.08	790.00	705.00
<b>Total - I</b>	<b>3773.23</b>	<b>3933.39</b>	<b>4625.23</b>	<b>5249.64</b>	<b>5826.14</b>	<b>5506.00</b>	<b>6057.00</b>
II. Dividends and Profits							
i) Government Commercial and Industrial Undertakings							
ii) Other Commercial and Industrial Undertakings							
iii) Cooperative Societies	12.92	7.44	11.03	10.87	10.52	21.00	23.00
iv) Interest on Debentures							
<b>Total II</b>	<b>12.92</b>	<b>7.44</b>	<b>11.03</b>	<b>10.87</b>	<b>10.52</b>	<b>21.00</b>	<b>23.00</b>
III. Other Non Tax Revenue							
a) General Services	1799.93	3099.08	4156.41	2687.47	4628.98	2837.00	5978.00
i) State Lotteries							
b) Social and Community Services	891.88	1038.63	1492.65	1433.48	6938.14	4169.00	1729.00

(₹ in Lakh)

Sources of Non Tax Revenue	2014-2015 Actual	2015-2016 Actual	2016-2017 Actual	2017-2018 Actual	2018-2019 Actual	2019-2020 R.E.	2020-2021 B.E.
1	2	3	4	5	6	7	8
c) Economic Services	27850.64	14781.35	58238.37	27282.01	25366.42	47524.00	55242.00
i) Receipts from Dairy Development (including Milk Supply Scheme)	1.33	1.22	1.66	1.24	3.42	226.00	248.00
ii) Forest receipts from sale of Railways sleepers							
iii) Receipts from royalties on minor minerals of Forest Department	7199.06	7207.87	10398.82	5561.17	7830.69	12583.00	12000.00
iv) Industrial Receipts	66.94	79.85	81.40	74.17	75.85	101.00	111.00
v) Receipts from Sericulture							
vi) Non ferrous Mining and Metallurgical Industries (Royalty on Coal, other major Minerals and Minor Minerals)	19509.61	2129.21	46951.60	20787.97	14755.90	32053.00	40066.00
vii) Other Receipts (C - (i+ii+ iii+iv+v+vi))	1073.70	5363.20	804.89	857.46	2700.56	2561.00	2817.00
<b>Total - III (a+b+c)</b>	<b>30542.45</b>	<b>18919.06</b>	<b>63887.43</b>	<b>31402.96</b>	<b>36933.54</b>	<b>54530.00</b>	<b>62949.00</b>
<b>Grand Total</b>	<b>34328.60</b>	<b>22859.89</b>	<b>68523.69</b>	<b>36663.47</b>	<b>42770.20</b>	<b>60057.00</b>	<b>69029.00</b>

Table - X

Revenue from Departmental Undertakings(NET)

(₹ in Lakh)

Net Transactions	2014-2015 Actual	2015-2016 Actual	2016-2017 Actual	2017-2018 Actual	2018-2019 Actual	2019-2020 R.E.	2020-2021 B.E.
1	2	3	4	5	6	7	8
1. Forest (Railway Sleepers)							
Revenue							
Expenditure							
<b>Net</b>							
2. Milk Supply Scheme							
Revenue							
Expenditure							
<b>Net</b>							
<b>3. Total Revenue</b>							
4. Total Expenditure							
<b>Net 3-4</b>							

Table - XI

## Revenue Expenditure on Economic Development

(₹ in Lakh)

Items of Expenditure	2014-2015 Actual	2015-2016 Actual	2016-2017 Actual	2017-2018 Actual	2018-2019 Actual	2019-2020 R.E.	2020-2021 B.E.
1	2	3	4	5	6	7	8
I. Agriculture and Allied Services							
1. Crop Husbandry	22328.30	22304.51	17146.23	19119.86	21617.29	31721.66	36242.91
2. Soil and Water Conservation	10338.02	8258.25	12860.59	7795.40	10046.54	27541.20	17053.03
3. Animal Husbandry	7887.5	8889.48	8799.87	11095.70	11905.63	15130.29	15219.64
4. Dairy Development	658.20	3400.46	767.06	874.48	1210.05	3612.19	2361.71
5. Fisheries	1577.33	1489.14	2668.85	1881.17	5339.30	6241.68	6860.06
6. Forest	14640.29	12275.74	12379.71	14454.04	14180.06	24682.45	23082.06
7. Co-operation	1619.01	1739.64	1851.75	2113.94	3508.19	2796.96	2953.16
<b>Total - I</b>	<b>59048.65</b>	<b>58357.22</b>	<b>56474.06</b>	<b>57334.59</b>	<b>67807.06</b>	<b>111726.43</b>	<b>103772.57</b>
II. Rural Development -							
1. Special Programme for Rural Development Area Development	6308.80	8317.99	8958.97	12534.53	8442.49	20798.00	28048.00
2. Rural Employment Programme	36025.74	30833.62	103554.01	70589.60	44764.70	134500.00	66619.00
3. Other Rural Development Programme	14478.83	14279.78	20591.99	23449.22	24567.74	18213.50	19227.06
4. Nutrition					0	0	0
<b>Total - II</b>	<b>56813.37</b>	<b>53431.39</b>	<b>133104.97</b>	<b>106573.35</b>	<b>77774.93</b>	<b>173511.50</b>	<b>113894.06</b>
III. Special Area Programme							
1. North Eastern Areas	1426.53	1771.23	1079.60	1297.50	1253.29	2277.00	5586.00
<b>Total - III</b>	<b>1426.53</b>	<b>1771.23</b>	<b>1079.60</b>	<b>1297.50</b>	<b>1253.29</b>	<b>2277.00</b>	<b>5586.00</b>
IV. Irrigation and Flood Control							
1. Major and Medium Irrigation					0.00	50.00	50.00
2. Minor Irrigation	3604.34	3854.45	4097.08	4751.98	5724.47	6743.71	9583.65
3. Flood Control	84.36	91.44	106.30	105.72	131.19	110.03	130.73
<b>Total - IV</b>	<b>3688.70</b>	<b>3945.89</b>	<b>4203.38</b>	<b>4857.70</b>	<b>5855.66</b>	<b>6903.74</b>	<b>9764.38</b>
V. Energy							
1. Power	16416.85	6328.73	12501.60	10916.44	16291.74	18440.07	20013.70
2. Special Programme for Development (IREP)	150.00	339.77	207.30	218.00	347.96	665.00	675.00
3. Non-conventional Sources of Energy (NRSE)	150.00	382.59	264.99	505.40	452.19	2846.00	855.00
<b>Total - V</b>	<b>16716.85</b>	<b>7051.09</b>	<b>12973.89</b>	<b>11639.84</b>	<b>17091.89</b>	<b>21951.07</b>	<b>21543.70</b>

(₹ in Lakh)

Items of Expenditure	2014-2015 Actual	2015-2016 Actual	2016-2017 Actual	2017-2018 Actual	2018-2019 Actual	2019-2020 R.E.	2020-2021 B.E.
1	2	3	4	5	6	7	8
VI. Industry and Mineral -							
1. Village and Small Industries							
(i). Sericulture and Weaving	4083.11	4827.96	4197.73	4618.22	4999.07	7927.89	8343.50
(ii). Village and Small Industries					0.00	0.00	0.00
2. Cottage Industries	3048.60	2092.62	2097.72	4188.14	3296.94	4986.54	8478.55
3. Industries	794.12	897.44	1616.22	4089.54	2111.00	1637.93	1768.10
4. Non-Ferrous Mining and Metallurgical Industries	11523.30	6970.52	6861.04	10224.85	9468.25	7075.81	7096.26
<b>Total - VI</b>	<b>19449.13</b>	<b>14788.54</b>	<b>14772.71</b>	<b>23120.75</b>	<b>19875.26</b>	<b>21628.17</b>	<b>25686.41</b>
VII. Transport -							
1. Road and Bridges	12146.50	14910.08	18616.46	17307.79	18908.87	20606.35	23894.01
2. Road Transport							
<b>Total VII</b>	<b>12146.50</b>	<b>14910.08</b>	<b>18616.46</b>	<b>17307.79</b>	<b>18908.87</b>	<b>20606.35</b>	<b>23894.01</b>
VIII. Science, Technology and Environment							
1. Other Scientific Research	53.85	58.33	52.49	45.32	56.74	88.65	98.35
<b>Total - VIII</b>	<b>53.85</b>	<b>58.33</b>	<b>52.49</b>	<b>45.32</b>	<b>56.74</b>	<b>88.65</b>	<b>98.35</b>
IX. General Economic Services							
1. Secretariat Economic Services-I-Civil Departments	2658.21	4589.08	1667.37	4450.56	17400.17	8538.17	32336.94
2. Secretariat Economic Services-II-Planning Board	8483.72	4568.63	23469.72	9712.31	20916.40	42805.48	80356.86
3. Tourism	1609.03	1990.61	1724.55	1359.67	1189.17	9719.18	9198.57
4. Census Survey and Statistic	1297.25	1200.89	1241.10	1362.96	1805.68	2178.36	2262.33
5. Census Survey and Statistics (Edn)	64.59	59.36	63.29	70.04	0.00	0.00	0.00
6. Census Survey & Statistics (GAD)					0.00	0.00	0.00
7. Civil Supplies	1932.53	2563.97	5823.18	5172.20	6843.44	5421.55	11967.45
8. Other General Economic Services (Weights and Measures)	607.91	417.93	460.44	515.53	671.99	846.18	841.78
9. Other General Economic Services land Ceiling					0	0	0
<b>Total - IX</b>	<b>16653.24</b>	<b>15390.47</b>	<b>34449.65</b>	<b>22643.27</b>	<b>48826.85</b>	<b>69508.92</b>	<b>136963.93</b>
<b>Grand Total</b>	<b>185996.82</b>	<b>169704.24</b>	<b>275727.21</b>	<b>244820.11</b>	<b>257450.55</b>	<b>428201.83</b>	<b>441203.41</b>



**Table - XII**  
**Revenue Expenditure on Social Services**  
**(2014-2015 onwards)**

(₹ in Lakh)

Items of Expenditure	2014-2015 Actual	2015-2016 Actual	2016-2017 Actual	2017-2018 Actual	2018-2019 Actual	2019-2020 R.E.	2020-2021 B.E.
1	2	3	4	5	6	7	8
I. Education Art & Culture							
1. Primary	77162.54	70924.79	89981.85	110431.84	131619.82	121253.25	119340.31
2. Secondary	22570.12	25072.09	33430.21	35475.16	41967.83	70666.63	62872.56
3. Special	523.42	576.09	852.61	705.20	804.90	1011.14	989.56
4. University and Higher Education	13884.90	15640.42	20330.90	16390.36	22887.48	45346.09	48841.27
5. Technical	1021.08	3656.93	2459.15	1284.45	1497.89	6291.69	6616.62
6. Sports and Youth Welfare	4189.05	7966.93	3104.98	3770.06	4274.65	21024.80	27340.31
7. General	2479.33	2617.26	3133.99	3305.41	4762.52	9840.11	10662.76
8. Arts and Culture	7893.16	1834.23	7519.85	2156.15	2720.58	6346.97	13363.92
<b>Total - I</b>	<b>129723.60</b>	<b>128288.74</b>	<b>160813.54</b>	<b>173518.63</b>	<b>210535.67</b>	<b>281780.68</b>	<b>290027.31</b>
II. Medical and Public Health							
1. Medical Relief	18235.04	19813.32	22738.52	29876.82	50589.55	47714.76	37229.48
2. Medical Education Training and Research	426.38	377.66	526.81	583.27	1690.56	893.75	871.53
3. Employees State Insurance Schemes				0			
4. Ayurvedic	61.38	56.40	56.11	805.94	159.43	133.66	229.70
5. Homeopathy	140.21	153.06	174.00	207.28	268.43	278.83	12026.70
6. Unani							
7. Sidda and other systems							
8. Stores							
9. Others	25958.20	26520.28	33064.93	30873.01	43453.09	50903.43	51173.46
<b>Total - II</b>	<b>44821.21</b>	<b>46920.72</b>	<b>56560.37</b>	<b>62346.32</b>	<b>96161.06</b>	<b>99924.43</b>	<b>101530.87</b>
III. Water Supply and Sanitation	16740.19	17886.77	18636.31	21223.41	25459.68	27076.26	29676.72
IV. Family Welfare	3518.25	4356.68	3873.38	4481.10	6113.27	8716.40	9164.41
V. Welfare of Scheduled Castes/Tribes & other Backward Classes	5085.99	114.91	26258.00	8166.68	9281.00	8305.00	19607.69
VI. Special Welfare and Nutrition	23829.26	19918.52	27987.40	30043.67	43655.46	51964.73	73677.00
VII. Welfare of Relief and Rehabilitation of displaced person					0.00	0.00	0.00
VIII. Labour and Employment	3262.41	2783.76	3310.90	3550.57	5093.29	13677.52	11403.23
IX. Urban Development	2177.95	2738.47	3996.04	2974.43	3874.56	11417.14	16929.91
X. Others	5020.79	10823.76	5782.38	5565.10	12549.57	13108.22	16747.23
<b>Grand Total</b>	<b>234179.65</b>	<b>233832.33</b>	<b>307218.32</b>	<b>311869.91</b>	<b>412723.56</b>	<b>515970.38</b>	<b>568764.37</b>

**Table - XIII**  
**Non Developmental Expenditure met from the Revenue Account**  
**(2014-2015 onwards)**

(₹ in Lakh)

Items of Expenditure	2014-2015 Actual	2015-2016 Actual	2016-2017 Actual	2017-2018 Actual	2018-2019 Actual	2019-2020 R.E.	2020-2021 B.E.
1	2	3	4	5	6	7	8
I. Organs of State	11649.35	12618.09	14465.14	20339.83	27182.00	29248.64	29074.75
II. Administrative Service -							
1. Police	48784.80	53485.26	57758.89	64903.27	82250.00	93267.63	98515.18
2. Jails	1050.26	1395.90	1671.89	1492.07	1868.86	2754.58	2438.07
3. District Administration	3021.22	3181.65	3374.72	4047.78	5168.18	5428.38	6209.42
4. Treasury and Accounts Administration	2744.28	2435.00	2578.79	2990.68	3622.12	4128.56	4209.92
5. Stationery and printing	1968.61	2101.78	2398.41	2630.02	2879.50	3415.23	3706.34
6. Natural Calamities	2844.37	5684.17	2692.03	2891.15	1651.85	3307.46	6886.21
7. Public Works	15359.38	15759.76	16618.49	18160.09	21487.18	27656.20	26507.94
8. Others	16902.05	13038.09	17630.81	21285.60	25864.16	76943.57	30895.45
<b>Total - II</b>	<b>92674.97</b>	<b>97081.61</b>	<b>104724.03</b>	<b>118400.66</b>	<b>144791.85</b>	<b>216901.61</b>	<b>179368.53</b>
III. Fiscal Services -							
1. Expenditure on collection of Taxation Income and Expenditure							
2. Expenditure on collection of Taxes on property and capital Transactions	1621.87	1552.50	1582.64	1717.75	2473.04	4410.22	3389.86
3. Expenditure on collection of Taxes on Commodities and Services	4609.17	5591.26	9512.74	6233.40	9861.55	9998.28	9971.34
4. Other Fiscal Services	33.19	35.81	36.54	40.94	52.20	63.93	62.83
<b>Total - III</b>	<b>6264.23</b>	<b>7179.57</b>	<b>11131.92</b>	<b>7992.09</b>	<b>12386.79</b>	<b>14472.43</b>	<b>13424.03</b>

(₹ in Lakh)

Items of Expenditure	2014-2015 Actual	2015-2016 Actual	2016-2017 Actual	2017-2018 Actual	2018-2019 Actual	2019-2020 R.E.	2020-2021 B.E.
1	2	3	4	5	6	7	8
IV. Pension and Misc. General Services	51497.08	58946.77	64788.43	75089.55	100496.66	85473.00	120764.23
<b>Total - IV</b>	<b>51497.08</b>	<b>58946.77</b>	<b>64788.43</b>	<b>75089.55</b>	<b>100496.66</b>	<b>85473.00</b>	<b>120764.23</b>
V. Servicing Debt -							
1. INTEREST ON INTERNAL DEBT							
i) Interest on Market Loans	21799.22	25971.52	30563.45	35583.58	41430.74	49746.65	59123.29
ii) Others	8482.62	9399.05	9467.68	10576.32	10007.26	10359.89	9633.64
<b>Total - I</b>	<b>30281.84</b>	<b>35370.57</b>	<b>40031.13</b>	<b>46159.90</b>	<b>51438.00</b>	<b>60106.54</b>	<b>68756.93</b>
2. INTEREST ON SMALL SAVINGS PROVIDENT FUND ETC.							
(i) Interest on State Provident Funds	8328.57	9444.17	10557.40	11372.64	12815.02	12864.00	14097.30
(ii) Interest on Insurance and Pension Funds							
(iii) Others							
<b>Total - 2</b>	<b>8328.57</b>	<b>9444.17</b>	<b>10557.40</b>	<b>11372.64</b>	<b>12815.02</b>	<b>12864.00</b>	<b>14097.30</b>
3. Interest on Loans and Advances from Central Government	1894.45	1773.13	1633.96	1585.30	1427.69	1640.42	1456.87
4. Interest on Reserve Funds							
5. Interest on Other Obligation	5.11	0.10	0.11	0.15		5.50	5.50
6. Appropriation for or Avoidance of Debt	2414.00	3138.00	3376.00	4638.00	4882.00	5063.28	5842.30
<b>Total - V</b>	<b>42923.97</b>	<b>49725.97</b>	<b>55598.60</b>	<b>63755.99</b>	<b>70562.71</b>	<b>79679.74</b>	<b>90158.90</b>
<b>Grand Total</b>	<b>205009.60</b>	<b>225552.01</b>	<b>250708.12</b>	<b>285578.12</b>	<b>355420.01</b>	<b>425775.42</b>	<b>432790.44</b>

**Table - XIV**

**Capital Expenditure  
(2014-2015 onwards)**

(₹ in Lakh)

Item of Expenditure	2014-2015 Actual	2015-2016 Actual	2016-2017 Actual	2017-2018 Actual	2018-2019 Actual	2019-2020 R.E.	2020-2021 B.E.
1	2	3	4	5	6	7	8
I. Developmental Expenditure -							
A. General Services -							
i) Public Works	6327.95	7966.61	6667.58	3586.45	7506.63	7228.60	11975.30
ii) Stationery and Printing and other Administrative Services	1909.99	1757.53	1632.22	1389.93	991.39	4762.00	5521.00
<b>Total - I</b>	<b>8237.94</b>	<b>9724.14</b>	<b>8299.80</b>	<b>4976.38</b>	<b>8498.02</b>	<b>11990.60</b>	<b>17496.30</b>
II. Social and Community Services -							
i) Education Arts and Culture	431.40	489.99	1079.08	185.50	266.11	1251.30	2181.25
ii) Medical & Public Health	8785.89	9209.10	8272.82	3420.82	4251.86	5594.00	11740.00
iii) Sanitation and Water Supply	19061.49	14266.58	18542.57	28397.06	22226.26	30786.40	37902.00
iv) Family Welfare							
v) Housing	700.4	2535.88	1276.10	508.07	1005.5	1909.20	2015.47
vi) Social Security and Welfare	1625.79	304.43	5979.29	1208.86	2874.94	6020.00	7519.05
vii) Others	5729.25	2162.76	10785.72	2337.03	5375.15	12468.79	14692.26
<b>Total - II</b>	<b>36334.22</b>	<b>28968.74</b>	<b>45935.58</b>	<b>36057.34</b>	<b>35999.82</b>	<b>58029.69</b>	<b>76050.03</b>

(₹ in Lakh)

Item of Expenditure	2014-2015 Actual	2015-2016 Actual	2016-2017 Actual	2017-2018 Actual	2018-2019 Actual	2019-2020 R.E.	2020-2021 B.E.
1	2	3	4	5	6	7	8
III. Economic Services -							
a) General Economic Services							
1) Other Communication Services							
2) Others							
<b>Total - (a)</b>							
b) Agriculture and Allied Activities	1035.81	695.96	944.92	520.22	941.44	1341.95	2606.10
c) Rural Development	9.96	10.00	370.00	141.18	79.52	331.52	1948.84
d) Special Areas Programme	5055.51	4607.82	4073.62	3991.55	4172.53	7723.00	8414.00
e) Irrigation and Flood Control	4212.99	362.26	4552.54	2573.43	9507.17	18050.00	17097.00
f) Energy		532		3187.22	336.00		
g) Industry and Mineral	6871.30	224.33	7261.37	980.00	387.31	199.00	2350.00
h) Transport	49986.54	65963.86	56693.20	44923.74	80705.15	74009.00	110828.00
i) Tourism	104.56		848.62	992.98	1100.80	1355.00	1455.00
j) Investments in General Financial and Trading Institution.							
<b>Total - III</b>	<b>67276.67</b>	<b>72396.23</b>	<b>74744.27</b>	<b>57310.32</b>	<b>97229.92</b>	<b>103009.47</b>	<b>144698.94</b>
<b>Grand Total of Capital Outlay</b>	<b>111848.83</b>	<b>111089.11</b>	<b>128979.65</b>	<b>98344.04</b>	<b>141727.76</b>	<b>173029.76</b>	<b>238245.27</b>
IV. Public Debt	29871.24	33734.35	41440.68	32961.61	39594.53	59120.00	51949.00
V. Loans and Advances	4232.90	15835.19	3083.11	2205.35	8948.90	35596.10	10261.00
VI. Transfer to Contingency Fund				10000.00			
<b>Grand Total of Capital Expenditure</b>	<b>145952.97</b>	<b>160658.65</b>	<b>173503.44</b>	<b>143511.00</b>	<b>190271.19</b>	<b>267745.86</b>	<b>300455.27</b>

**Table - XV**  
**Development Expenditure (2014-2015 onwards)**

(₹ in Lakh)

Items of Expenditure	2014-2015 Actual	2015-2016 Actual	2016-2017 Actual	2017-2018 Actual	2018-2019 Actual	2019-2020 R.E.	2020-2021 B.E.
1	2	3	4	5	6	7	8
<b>A. STATE PLAN</b>							
1. Revenue Expenditure	163348.65	174542.86	346011.60	244057.67	0.00	186121.96	220758.73
2. Capital Outlay -							
a) Capital Expenditure	102166.97	105217.16	119356.14	94223.02	0	66407.84	106706.11
b) Loans and Advances	3902.18	4059.38	1343.80	112.33	5802.45	1416.80	6241.00
<b>Total - 2</b>	<b>106069.15</b>	<b>109276.54</b>	<b>120699.94</b>	<b>94335.35</b>	<b>5802.45</b>	<b>67824.64</b>	<b>112947.11</b>
<b>Total - (1+2)</b>	<b>269417.80</b>	<b>283819.40</b>	<b>466711.54</b>	<b>338393.02</b>	<b>5802.45</b>	<b>253946.60</b>	<b>333705.84</b>
3. Plan Programme Financed by State Undertakings out of the resources outside the State Budget:-							
a) Meghalaya Electricity Board							
b) Meghalaya Road Transport Corporation							
<b>Total - 3</b>							
<b>Total A (1+2+3)</b>	<b>269417.80</b>	<b>283819.40</b>	<b>466711.54</b>	<b>338393.02</b>	<b>5802.45</b>	<b>253946.60</b>	<b>333705.84</b>
<b>B. CENTRALLY SPONSORED PLAN SCHEMES-</b>							
1. Revenue Expenditure	53255.75	27694.80	22166.37				
2. Capital Outlay -							
a) Capital Expenditure	4626.36	1241.11	389.41				
b) Loans and Advances							
<b>Total - 2 (a+b)</b>	<b>4626.36</b>	<b>1241.11</b>	<b>389.41</b>				
<b>Total B (1+2)</b>	<b>57882.11</b>	<b>28935.91</b>	<b>22555.78</b>				

(₹ in Lakh)

Items of Expenditure	2014-2015 Actual	2015-2016 Actual	2016-2017 Actual	2017-2018 Actual	2018-2019 Actual	2019-2020 R.E.	2020-2021 B.E.
1	2	3	4	5	6	7	8
<b>C. CENTRAL PLAN SCHEMES -</b>							
1. Revenue Expenditure	17.39		59.73				
2. Capital Outlay -							
a) Capital Expenditure							
b) Loans and Advances							
<b>Total - 2 (a+b)</b>	<b>0.00</b>	<b>0.00</b>	<b>0.00</b>				
<b>Total C (1+2)</b>	<b>17.39</b>	<b>0.00</b>	<b>59.73</b>				
<b>D. N.E.C. REGIONAL PLAN</b>							
1. Revenue Expenditure	1426.53	1771.23	1079.60	1297.50	1253.29	2277.00	5586.00
2. Capital Outlay -							
a) Capital Expenditure	5055.51	4607.82	4073.62	3991.55	4172.53	7723.00	8414.00
b) Loans and Advances							
<b>Total - 2 (a+b)</b>	<b>5055.51</b>	<b>4607.82</b>	<b>4073.62</b>	<b>3991.55</b>	<b>4172.53</b>	<b>7723.00</b>	<b>8414.00</b>
<b>Total D(1+2)</b>	<b>6482.04</b>	<b>6379.05</b>	<b>5153.22</b>	<b>5289.05</b>	<b>5425.82</b>	<b>10000.00</b>	<b>14000.00</b>
<b>E. CENTRALLY SPONSORED SCHEME</b>							
1. Revenue Expenditure				32296.54	148273.47	314751.38	227991.19
2. Capital Outlay -							
a) Capital Expenditure				129.57	7954.02	82592.92	90736
b) Loans and Advances							
<b>Total - 2 (a+b)</b>				<b>129.57</b>	<b>7954.02</b>	<b>82592.92</b>	<b>90736.00</b>
<b>Total E(1+2)</b>				<b>32426.11</b>	<b>156227.49</b>	<b>397344.30</b>	<b>318727.19</b>
<b>Grand Total</b>	<b>333799.34</b>	<b>319134.36</b>	<b>494480.27</b>	<b>376108.18</b>	<b>167455.76</b>	<b>661290.90</b>	<b>666433.03</b>

**Table - XVI**

**Provisional outlay for the Twelfth Five Year Plan and Annual Plan Outlay  
for 2018-2019, 2019-2020 & 2020-2021**

(₹ in Lakh)

<b>Particulars</b>	<b>2018-2019 Approved Outlay</b>	<b>2019-2020 Revised Outlay</b>	<b>2020-2021 Tentative Plan Outlay</b>
1. Agriculture and Allied Services	59619.00	57180.00	51079.10
2. Rural Development	173157.00	145794.00	107671
3. Special Areas Programme (Border Areas Development)	5996.00	4730.00	4970.1
4. Water Resources, Irrigation and Flood Control	19920.00	19041.00	23135
5. Energy	13140.00	44662.00	27390
6. Industries and Minerals	6880.00	6506.00	11649.99
7. Transport	72980.00	64726.00	113968
8. Science Technology and Environment	10996.00	16355.00	17025
9. Social and Community Services	253245.00	281535.00	363678.9
10. General Economic Services and General Services	80967.00	71271.00	141032.91
11. Forestry and Wild Life			
<b>T o t a l</b>	<b>696900.00</b>	<b>711800.00</b>	<b>861600.00</b>



**Table - XVII**

**Actual Expenditure under Annual Plan for 2016-2017, 2017-2018 & 2018-2019**

(₹ in Lakh)

<b>Particulars</b>	<b>2016-2017 Actuals</b>	<b>2017-2018 Actuals</b>	<b>2018-2019 Actuals</b>
<b>1</b>	<b>2</b>	<b>3</b>	<b>4</b>
1. Agriculture and Allied Services	23820.39	53583.58	71112.00
2. Rural Development	128248.77	106932.53	78203.00
3. Special Areas Programme (Border Areas Development)	50.16		4728.00
4. Irrigation and Flood Control	6113.77	7410.02	15363.00
5. Energy	10928.41	14609.06	20339.00
6. Industries and Minerals	4110.60	24095.75	20262.00
7. Transport	56693.20	62231.53	99614.00
8. Science Technology and Environment		45.32	57.00
9. General Services	9375.79	221641.90	362086.00
10. Social and Community Services	196113.94	322691.35	446007.00
11. General Economic Services	29962.87	23634.53	49928.00
<b>Total</b>	<b>465417.90</b>	<b>836875.57</b>	<b>1167699.00</b>

**Table - XVIII (A)**  
**AS ON THE 31ST MARCH OF THE YEAR 2014-2015 (Actual)**

**Magnitude of Debt of the State Government from the Central Government and other financial institutions**

(₹ in Lakh)

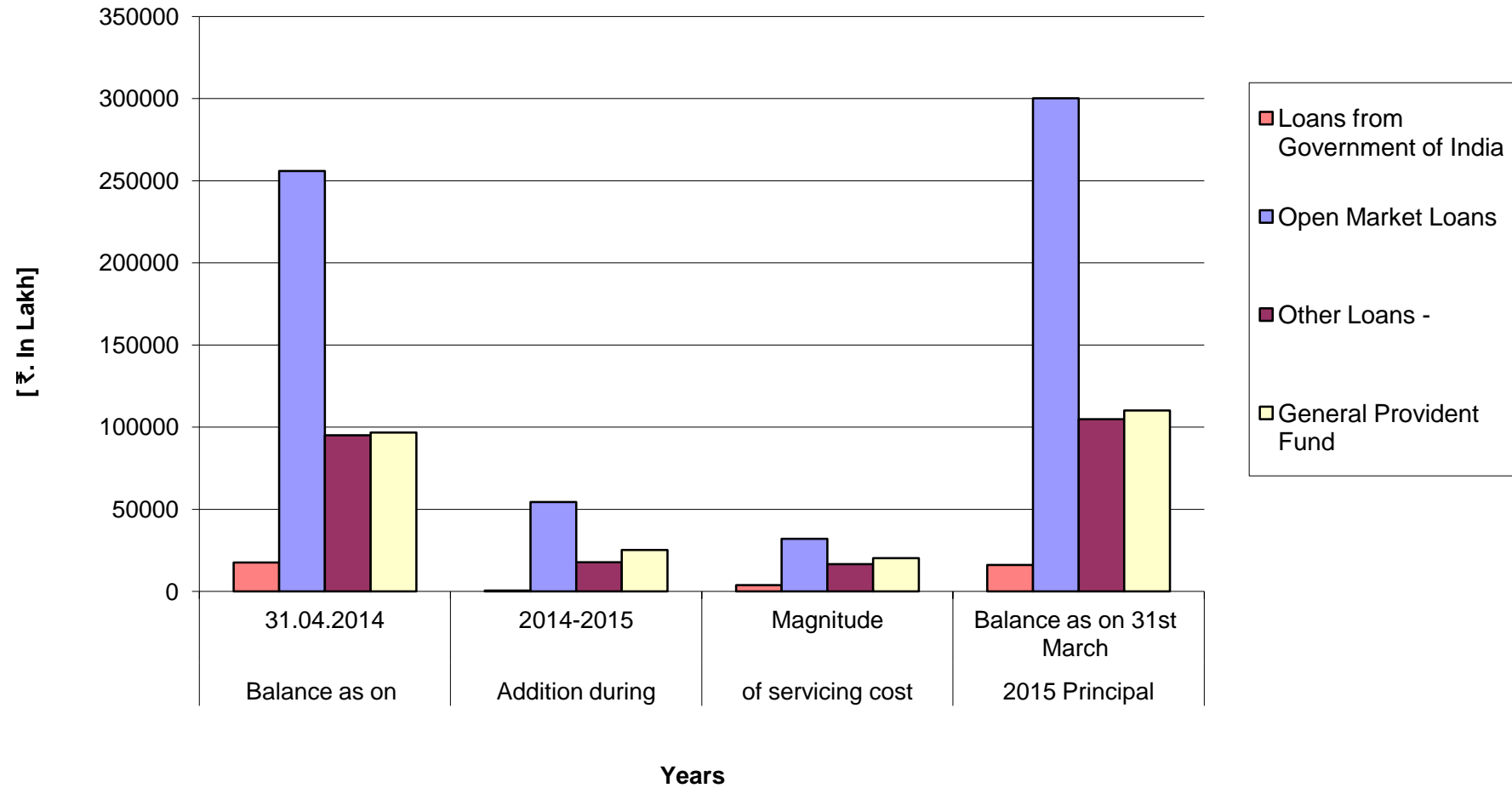
Particulars	Balance as on 31.3.2014	Addition during 2014-15	Magnitude of servicing cost of charges during 2014-2015			Balance as on 31st March 2015	Total Receipts	Percentage of servicing cost to Total Receipts
			Principal	Interest	Total			
1	2	3	4	5	6	7	8	9
1. Loans from Government of India	17644.40	476.70	1981.83	1894.45	3876.28	16139.27	644801.60	0.60%
2. Open Market Loans	255869.76	54500.35	10208.30	21799.21	32007.51	300161.81		
3. Floating Loans								
4. Other Loans -								
i) Loan from L.I.C.	17.04		3.84	0.50	4.34	13.20		
ii) Loan from G.I.C.	36.89		7.60	5.73	13.33	29.29		
iii) Loan from NABARD	28041.51	7787.83	5344.75	1935.42	7280.17	30484.59		
iv) Loan from N.C.D.C.	80.45		34.68	8.48	43.16	45.77		
v) Loan from Central Warehousing Corporation								
vi) Special securities issued to NSSF	63162.34	9931.00	1519.10	6141.13	7660.23	71574.24		
vii) Compensation & other bonds	279.80		139.90	26.76	166.66	139.90		
viii) Loans from other Financial Institution	3506.03		1026.27	369.72	1395.99	2479.76		
ix) Loans from I.L.F.C.								
<b>Total - (2+3+4)</b>	<b>350993.82</b>	<b>72219.18</b>	<b>18284.44</b>	<b>30286.95</b>	<b>48571.39</b>	<b>404928.56</b>	<b>0.00</b>	<b>7.53%</b>
<b>Total (1+2+3+4)</b>	<b>368638.22</b>	<b>72695.88</b>	<b>20266.27</b>	<b>32181.40</b>	<b>52447.67</b>	<b>421067.83</b>	<b>644801.60</b>	<b>8.13%</b>
5. General Provident Fund	96760.41	25274.48	11946.35	8328.57	20274.92	110088.54		

Note - 1. Reserve Bank of India did not include ways and means advance in their accounts

2. Reserve Bank of India ignored thousand of rupees

Source - 1. Loans State Govt. Ledgers

## Magnitude of Debt as on 31st March of the year 2014-2015 (Actuals) (Table XVIII A)



**Table - XVIII (B)**  
**AS ON THE 31ST MARCH OF THE YEAR 2015-2016 (Actual)**

**Magnitude of Debt of the State Government from the Central Government and other financial institutions**

(₹ in Lakh)

Particulars	Balance as on 31.3.2015	Addition during 2015-16	Magnitude of servicing cost of charges during 2015-2016			Balance as on 31st March 2016	Total Receipts	Percentage of servicing cost to Total Receipts
			Principal	Interest	Total			
1	2	3	4	5	6	7	8	9
1. Loans from Government of India	16139.27	223.46	1994.78	1773.13	3767.91	14367.95	706220.87	0.53%
2. Open Market Loans	300161.81	68000.00	22031.30	25971.52	48002.82	346130.51		
3. Floating Loans	0.00				0.00	0.00		
4. Other Loans -	0.00				0.00	0.00		
i) Loan from L.I.C.	13.20		2.28	0.18	2.46	10.92		
ii) Loan from G.I.C.	29.29		7.03	246.20	253.23	22.26		
iii) Loan from NABARD	30484.59	6638.04	5773.39	2111.15	7884.54	31349.24		
iv) Loan from N.C.D.C.	45.77		14.82	4.50	19.32	30.95		
v) Loan from Central Warehousing Corporation	0.00				0.00	0.00		
vi) Special securities issued to NSSF	71574.24	8832.00	2855.55	6869.19	9724.74	77550.69		
vii) Compensation & other bonds	139.90		139.90	14.86	154.76	0.00		
viii) Loans from other Financial Institution	2479.76		925.23		925.23	1554.53		
ix) Loans from I.L.F.C.	0.00					0.00		
<b>Total - (2+3+4)</b>	<b>404928.56</b>	<b>83470.04</b>	<b>31749.50</b>	<b>35217.60</b>	<b>66967.10</b>	<b>456649.10</b>	<b>0.00</b>	<b>9.48%</b>
<b>Total (1+2+3+4)</b>	<b>421067.83</b>	<b>83693.50</b>	<b>33744.28</b>	<b>36990.73</b>	<b>70735.01</b>	<b>471017.05</b>	<b>706220.87</b>	<b>10.02%</b>
5. General Provident Fund	110088.54	27508.02	14334.34	9444.17	23778.51	123262.22		

Note - 1. Reserve Bank of India did not include ways and means advance in their accounts  
2. Reserve Bank of India ignored thousand of rupees  
Source - 1. Loans State Govt. Ledgers

**Table - XVIII (C)**  
**AS ON THE 31ST MARCH OF THE YEAR 2016-2017 (Actual)**

**Magnitude of Debt of the State Government from the Central Government and other financial institutions**

(₹ in Lakh)

Particulars	Balance as on 31.3.2016	Addition during 2016-17	Magnitude of servicing cost of charges during 2016-2017			Balance as on 31st March 2017	Total Receipts	Percentage of servicing cost to Total Receipts
			Principal	Interest	Total			
1	2	3	4	5	6	7	8	9
1. Loans from Government of India	14367.95	427.55	1990.67	1633.76	3624.43	12804.83	895775.76	0.40%
2. Open Market Loans	346130.51	100100.00	28267.20	30563.45	58830.65	417963.31		
3. Floating Loans	0.00					0.00		
4. Other Loans -	0.00					0.00		
i) Loan from L.I.C.	10.92		0.52	0.03	0.55	10.40		
ii) Loan from G.I.C.	22.26		6.44	135.29	141.73	15.82		
iii) Loan from NABARD	31349.24	8011.57	6068.49	2187.60	8256.09	33292.32		
iv) Loan from N.C.D.C.	30.95	4.00	13.66	2.88	16.54	21.29		
v) Loan from Central Warehousing Corporation	0.00				0.00	0.00		
vi) Special securities issued to NSSF	77550.69		4238.25	7396.16	11634.41	73312.44		
vii) Compensation & other bonds	0.00	12500.000		2.97	2.97	12500.00		
viii) Loans from other Financial Institution	1554.53		855.45		855.45	699.08		
ix) Loans from I.L.F.C.	0.00					0.00		
<b>Total - (2+3+4)</b>	<b>456649.10</b>	<b>120615.57</b>	<b>39450.01</b>	<b>40288.38</b>	<b>79738.39</b>	<b>537814.66</b>	<b>0.00</b>	<b>8.90%</b>
<b>Total (1+2+3+4)</b>	<b>471017.05</b>	<b>121043.12</b>	<b>41440.68</b>	<b>41922.14</b>	<b>83362.82</b>	<b>550619.49</b>	<b>895775.76</b>	<b>9.31%</b>
5. General Provident Fund	123262.22	29789.07	15671.76	10557.40	26229.16	137379.53		

Note - 1. Reserve Bank of India did not include ways and means advance in their accounts  
2. Reserve Bank of India ignored thousand of rupees

Source - 1. Loans State Govt. Ledgers

**Table - XVIII (D)**  
**AS ON THE 31ST MARCH OF THE YEAR 2017-2018 (Actual)**

**Magnitude of Debt of the State Government from the Central Government and other financial institutions**

(₹ in Lakh)

Particulars	Balance as on 31.3.2017	Addition during 2017-18	Magnitude of servicing cost of charges during 2017-2018			Balance as on 31st March 2018	Total Receipts	Percentage of servicing cost to Total Receipts
			Principal	Interest	Total			
1	2	3	4	5	6	7	8	9
1. Loans from Government of India	12804.83	666.85	2033.60	1585.31	3618.91	11438.08	929093.45	0.39%
2. Open Market Loans	417963.31	111550.00	19568.70	35583.58	55152.28	509944.61		
3. Floating Loans	0.00					0.00		
4. Other Loans -	0.00					0.00		
i) Loan from L.I.C.	10.40				0.00	10.40		
ii) Loan from G.I.C.	15.82		5.78		5.78	10.04		
iii) Loan from NABARD	33292.32	10297.07	6209.93	2303.33	8513.26	37379.46		
iv) Loan from N.C.D.C.	21.29		10.08	45.26	55.34	11.21		
v) Loan from Central Warehousing Corporation	0.00					0.00		
vi) Special securities issued to NSSF	73312.44		4538.25	7155.87	11694.12	68774.19		
vii) Compensation & other bonds	12500.00			963.75	963.75	12500.00		
viii) Loans from other Financial Institution	699.08		595.27	3312.34	3907.61	103.81		
ix) Loans from I.L.F.C.	0.00					0.00		
<b>Total - (2+3+4)</b>	<b>537814.66</b>	<b>121847.07</b>	<b>30928.01</b>	<b>49364.13</b>	<b>80292.14</b>	<b>628733.72</b>	<b>0.00</b>	<b>8.64%</b>
<b>Total (1+2+3+4)</b>	<b>550619.49</b>	<b>122513.92</b>	<b>32961.61</b>	<b>50949.44</b>	<b>83911.05</b>	<b>640171.80</b>	<b>929093.45</b>	<b>9.03%</b>
5. General Provident Fund	137379.53	31915.08	16143.87	11372.64	27516.51	153150.74		

Note - 1. Reserve Bank of India did not include ways and means advance in their accounts  
2. Reserve Bank of India ignored thousand of rupees

Source - 1. Loans State Govt. Ledgers

**Table - XVIII (E)**  
**AS ON THE 31ST MARCH OF THE YEAR 2018-2019 (Actuals)**

**Magnitude of Debt of the State Government from the Central Government and other financial institutions**

(₹ in Lakh)

Particulars	Balance as on 31.3.2018	Addition during 2018-19	Magnitude of servicing cost of charges during 2018-2019			Balance as on 31st March 2019	Total Receipts	Percentage of servicing cost to Total Receipts
			Principal	Interest	Total			
1	2	3	4	5	6	7	8	9
1. Loans from Government of India	11438.08	2241.22	2062.00	1427.69	3489.69	11617.30	1106132.50	0.32%
2. Open Market Loans	509944.61	112200.00	25940.26	41430.74	67371.00	596204.35		
3. Floating Loans	0.00							
4. Other Loans -	0.00							
i) Loan from L.I.C.	10.40					10.40		
ii) Loan from G.I.C.	10.04		5.50	4.77	10.27	4.54		
iii) Loan from NABARD	37379.46	14256.68	6505.93	2353.33	8859.26	45130.21		
iv) Loan from N.C.D.C.	11.21	3771.00	3.09	0.71	3.80	3779.12		
v) Loan from Central Warehousing Corporation	0.00							
vi) Special securities issued to NSSF	68774.19		4962.25	6552.93	11515.18	63811.94		
vii) Compensation & other bonds	12500.00			963.75	963.75	12500.00		
viii) Loans from other Financial Institution	103.81		115.50	8.99	124.49	-11.69		
ix) Loans from I.L.F.C.	0.00							
<b>Total - (2+3+4)</b>	<b>628733.72</b>	<b>130227.68</b>	<b>37532.53</b>	<b>51315.22</b>	<b>88847.75</b>	<b>721428.87</b>	<b>0.00</b>	<b>8.03%</b>
<b>Total (1+2+3+4)</b>	<b>640171.80</b>	<b>132468.90</b>	<b>39594.53</b>	<b>52742.91</b>	<b>92337.44</b>	<b>733046.17</b>	<b>1106132.50</b>	<b>8.35%</b>
5. General Provident Fund	153150.74	39503.88	21567.35	12815.02	34382.37	171087.27		

Note - 1. Reserve Bank of India did not include ways and means advance in their accounts

2. Reserve Bank of India ignored thousand of rupees

Source - 1. Loans State Govt. Ledgers

**Table - XVIII (F)**  
**AS ON THE 31ST MARCH OF THE YEAR 2019-2020 (BE)**

**Magnitude of Debt of the State Government from the Central Government and other financial institutions**

(₹ in Lakh)

Particulars	Balance as on 31.3.2019	Addition during 2019-20	Magnitude of servicing cost of charges during 2019-2020			Balance as on 31st March 2020	Total Receipts	Percentage of servicing cost to Total Receipts
			Principal	Interest	Total			
1	2	3	4	5	6	7	8	9
1. Loans from Government of India	11617.30	6140.00	2127.00	1640.42	3767.42	15630.30	1498896.00	0.25%
2. Open Market Loans	596204.35	124025.00	27354.00	49746.65	77100.65	692875.35		
3. Floating Loans	0.00				0.00	0.00		
4. Other Loans -	0.00				0.00	0.00		
i) Loan from L.I.C.	10.40				0.00	10.40		
ii) Loan from G.I.C.	4.54		6.00	3.00	9.00	-1.46		
iii) Loan from NABARD	45130.21	25000.00	6600.00	2858.32	9458.32	63530.21		
iv) Loan from N.C.D.C.	3779.12		3.00	4.39	7.39	3776.12		
v) Loan from Central Warehousing Corporation	0.00				0.00	0.00		
vi) Special securities issued to NSSF	63811.94		5500.00	6280.04	11780.04	58311.94		
vii) Compensation & other bonds	12500.00			1000.00	1000.00	12500.00		
viii) Loans from other Financial Institution	-11.69	1000.00	30.00	30.00	60.00	958.31		
ix) Loans from I.L.F.C.	0.00					0.00		
<b>Total - (2+3+4)</b>	<b>721428.87</b>	<b>150025.00</b>	<b>39493.00</b>	<b>59922.40</b>	<b>99415.40</b>	<b>831960.87</b>	<b>0.00</b>	<b>6.63%</b>
<b>Total (1+2+3+4)</b>	<b>733046.17</b>	<b>156165.00</b>	<b>41620.00</b>	<b>61562.82</b>	<b>103182.82</b>	<b>847591.17</b>	<b>1498896.00</b>	<b>6.88%</b>
5. General Provident Fund	171087.27	30800.00	24292.00	12864.00	37156.00	177595.27		

Note - 1. Reserve Bank of India did not include ways and means advance in their accounts

2. Reserve Bank of India ignored thousand of rupees

Source - 1. Loans State Govt. Ledgers



**Table - XVIII (G)**  
**AS ON THE 31ST MARCH OF THE YEAR 2020-2021 (BE)**

**Magnitude of Debt of the State Government from the Central Government and other financial institutions**

(₹ in Lakh)

Particulars	Balance as on 31.3.2020	Addition during 2020-2021	Magnitude of servicing cost of charges during 2020-2021			Balance as on 31st March 2021	Total Receipts	Percentage of servicing cost to Total Receipts
			Principal	Interest	Total			
1	2	3	4	5	6	7	8	9
1. Loans from Government of India	15630.30	6754.00	2340.00	1456.87	3796.87	20044.30	1737456.00	0.22%
2. Open Market Loans	692875.35	155200.00	19000.00	59123.29	78123.29	829075.35		
3. Floating Loans	0.00				0.00	0.00		
4. Other Loans -	0.00				0.00	0.00		
i) Loan from L.I.C.	10.40				0.00	10.40		
ii) Loan from G.I.C.	-1.46		6.00	1.50	7.50	-7.46		
iii) Loan from NABARD	63530.21	20000.00	7600.00	2850.00	10450.00	75930.21		
iv) Loan from N.C.D.C.	3776.12		3.00	2.50	5.50	3773.12		
v) Loan from Central Warehousing	0.00				0.00	0.00		
vi) Special securities issued to NSSF	58311.94		5500.00	5570.50	11070.50	52811.94		
vii) Compensation & other bonds	12500.00			1000.00	1000.00	12500.00		
viii) Loans from other Financial Institution	958.31			20.00	20.00	958.31		
ix) Loans from I.L.F.C.	0.00				0.00	0.00		
<b>Total - (2+3+4)</b>	<b>831960.87</b>	<b>175200.00</b>	<b>32109.00</b>	<b>68567.79</b>	<b>100676.79</b>	<b>975051.87</b>	<b>0.00</b>	<b>5.79%</b>
<b>Total (1+2+3+4)</b>	<b>847591.17</b>	<b>181954.00</b>	<b>34449.00</b>	<b>70024.66</b>	<b>104473.66</b>	<b>995096.17</b>	<b>1737456.00</b>	<b>6.01%</b>
5. General Provident Fund	177595.27	29119.00	22879.00	14097.30	36976.30	183835.27		

Note - 1. Reserve Bank of India did not include ways and means advance in their accounts

2. Reserve Bank of India ignored thousand of rupees

Source - 1. Loans State Govt. Ledgers

## Magnitude of Debt as on 31st March of the year 2020-2021 (B.E.) (Table XVIII G)

